



Pi3 Benchmarks

Pi³ Benchmarks is a system that collects statistical data sourced from slaughter and compliance processes in the meat processing environment. Data can then be graphically illustrated to reveal trends, issues and outcomes from management initiatives.

Description

Pi3 Benchmarks combines site Statistical Process Control System and Disease and Defect data as collected by AsureQuality. This data is collected into a single database which is accessed via the online Pi3 Benchmarks report writer. Customers are able to produce comparative national information relating to disease levels, defect levels, and inspection performance at customisable, discrete interval times.

Pi3 Benchmarks customers use the system to compare their site performance on a blind basis.

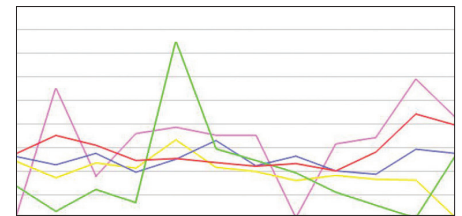
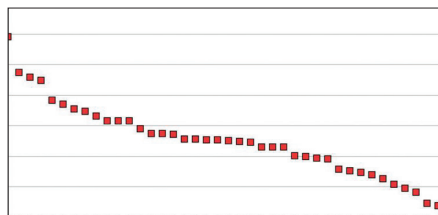
Key Benefits

- Pi3 Benchmarks enables customers to take a snapshot in time and compare their results for each type of data against all other plants nationally on a blind basis.
- Management information reporting via Pi3 Benchmarks often triggers or reinforces areas where further investigation may be required.
- Data is collected by meat inspectors either electronically or by using a manual ticket pull. No additional frontline labour costs apply.
- AsureQuality records statistics at every export meat processing site in New Zealand therefore canvassing 100% of the industry.

- All data relating to AsureQuality's customers remains confidential and is only accessed by the appropriate user through access permission configured to their login.
- The Ministry for Primary Industries requires reporting functionality such as Pi3 Benchmarks for companies managing persons undertaking post-mortem examination.
- Pi3 Benchmarks is significant for research and regulatory organisations in order to understand the prevalence of disease conditions.

Pi3 Benchmarks Report Types

- Pareto Report – Compares your plant's performance with other plants over a selected period of time.
- Date Range Report – Takes a snapshot over time of your plant for any variations amongst the samples, to pinpoint areas where particular problems / improvements have occurred.



Pi3 Benchmarks Monthly Reports

Each month AsureQuality distributes standard reports to Pi3 Benchmarks customers, including an all plant comparison by month and a national average comparison over the past 12 months. Standard reports cover the following aspects:

- Faecal contamination
- Other contamination
- Wounds and bruises
- Pathology
- Condemnation



How to reach us

If you'd like to know more, please contact us.

AsureQuality Meat Services, freephone 0508 00 11 22